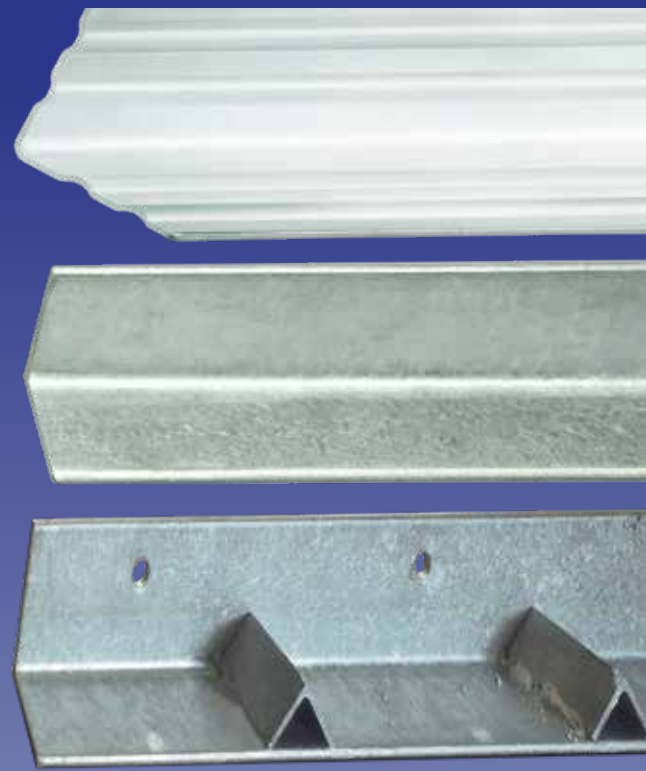
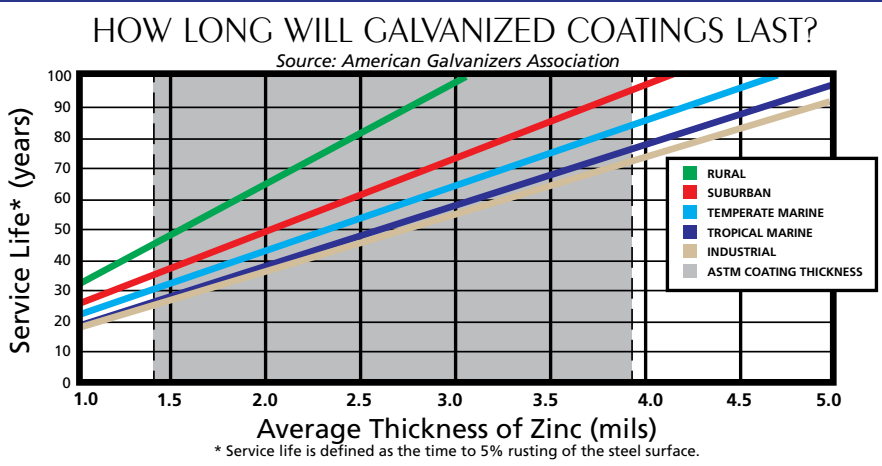


SOUTH ATLANTIC

MASONRY PRODUCTS



The Service Life Chart (above) was developed based on decades of corrosion rate data collected from galvanized steel samples exposed to the five defined environments in cities all over the world, and a corrosion prediction model based on statistical methods and neural network technology.

HOT-DIP GALVANIZED STEEL VS. PAINT

Hot-Dip Galvanized Steel	VS.	Paint
No	Special Handling	Paper interleave, cloth slings, wood separators
No	Field Touch-up	Required
Factory	Application	Field or Factory
No	Weather Dependent	Yes
-75°F to 392°F	Temperature Range	< 200°F
Cathodic & Barrier	Corrosion Protection	Barrier
> 3.9 mils (1/4" thick steel)	Coating Thickness	Variable
3600 psi	Bond Strength	300-600 psi
179 to 250 DPN	Hardness/Abrasion Resistance	Varies by Type
75 Years	Service Life - Atmospheric	12-15 Years

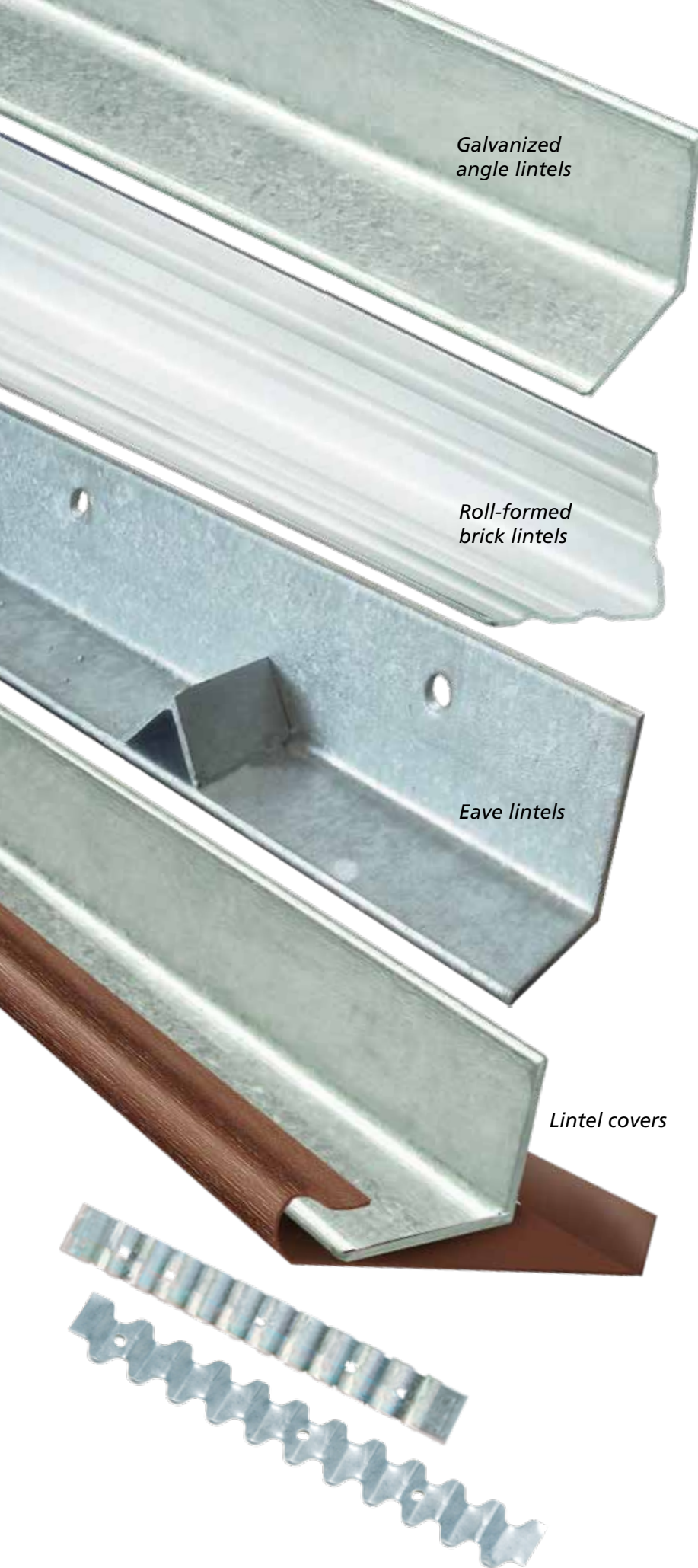
Newly galvanized

30 years later

Newly painted

4 years later

Source: American Galvanizers Association



*Galvanized
angle lintels*

*Roll-formed
brick lintels*

Eave lintels

Lintel covers

LINTELS

GALVANIZED ANGLE LINTELS

The long life of galvanized steel angle lintels reduces the chances of costly rust jacking, a problem that occurs when lintel corrosion causes severe expansion cracking or shifting in brickwork.

Hot-dip galvanized steel has been used for nearly 200 years to resist corrosion in the most severe environments. The unique chemistry of zinc galvanizing chemically reacts in the presence of water to create rust resistance at the point of any surface damage.

South Atlantic's galvanizing process creates alloy layers that are harder than many base steels.

ANGLE IRON LINTELS

- Domestic A36 angle iron
- 3" x 3" x 3/16" through 6" x 4" x 3/8" (Other sizes available on request)
- Cut to your specific lengths with holes as requested
- Hot dip galvanized, primer coated, or bare.

ROLL-FORMED BRICK LINTELS

- Made from hot dip galvanized or primed U.S. steel
- Sizes in 14 gauge steel up to 48", and 10 gauge steel up to 96"
- Roll formed with two ribs for added strength

EAVE LINTELS

- 5" x 3-1/2" x 5/16" angle with 9/16" holes and stops welded every 16 inches to give support to exterior masonry veneer on sloped roof construction
- Available in either galvanized or primed after fabrication
- Custom sizes available upon request

LINTEL COVERS

- For 3" & 3-1/2" angles in 5 brushed colors
- Covers for 3" angle are only offered in white
- 25 - 10 foot sections per box

WALL TIES

- Domestic steel, galvanized, 250 per box
- 22 & 28 gauge, 7/8" x 7" corrugated wall ties
- Straight or serrated edge

FASTENERS

ANCHOR BOLTS

- 1/2" and 3/8" anchor bolts from 8" through 18"
- Hot dip galvanized or plain
- Nut and washer included
- Manufactured in accordance with ASTM A307, grade C

NAILS

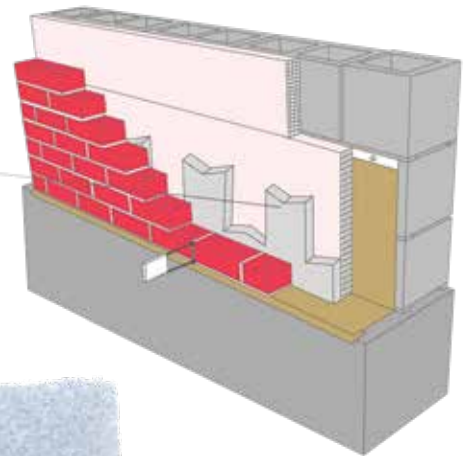
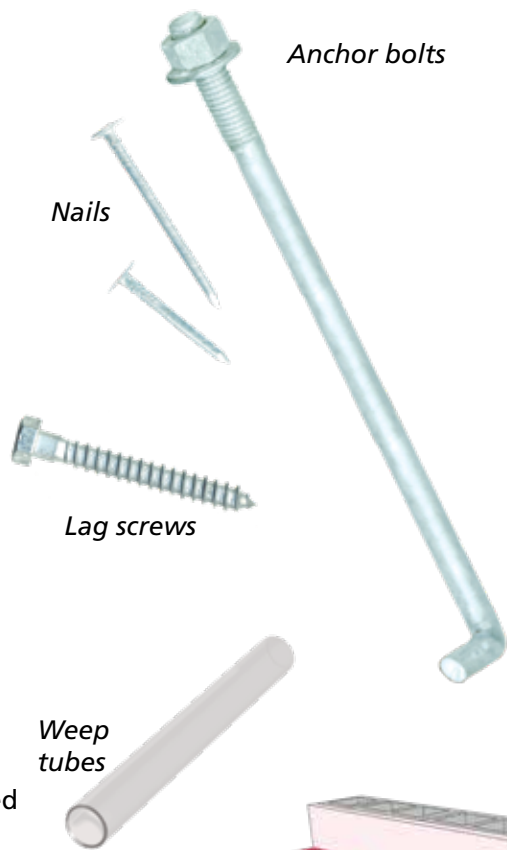
- 6d hot-dip galvanized common nails
- 8d hot-dip galvanized common nails, in smooth or ringed shank
- 1-1/2" hot-dip galvanized 11ga nails
- 2-1/2" hot-dip galvanized 11ga nails
- Cartons of 10 – 5lb boxes

LAG SCREWS

- 3/6" x 3" hot-dip galvanized with washer

SQUARE WASHERS

- 2" x 2" x 3/16" with slotted hole, plain or hot dip galvanized



VENTILATION

WEEP TUBES

- 3/8" x 4" clear plastic
- 1,000 per box
- Bagged either 25 pc per bag or 100 pc per bag

MORTAR HALT™

- 100% recycled polyester fibers and water based resins
- Promotes positive airflow ventilation
- 3 thicknesses for .5", 1" and 2" wall cavity applications
- 10" x 5'
- 100 lf per (1.0, 2.0) box & 250 lf per (.50) box

SOFT CELL VENTS

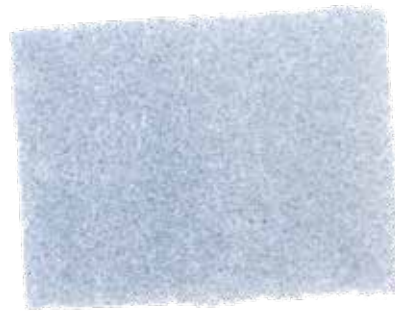
- Standard grey
- 3.8" x 3-1/2" x 2-5/8"
- 125 pc per box

HARD CELL VENTS

- Standard 3/8" x 3-3/8" x 2-1/2"
- Grey and clear
- Other colors and jumbo size available by special order

WATERPROOF FLASHING

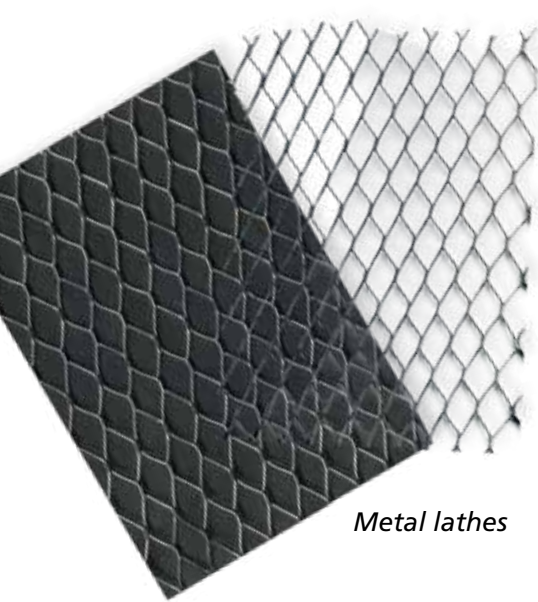
- 20 mil poly in 12" or 16" widths
- 40 mil composite self-adhesive in 12" or 18" widths



Soft cell vents



Hard cell vents



Metal lathes

LATH

METAL LATH

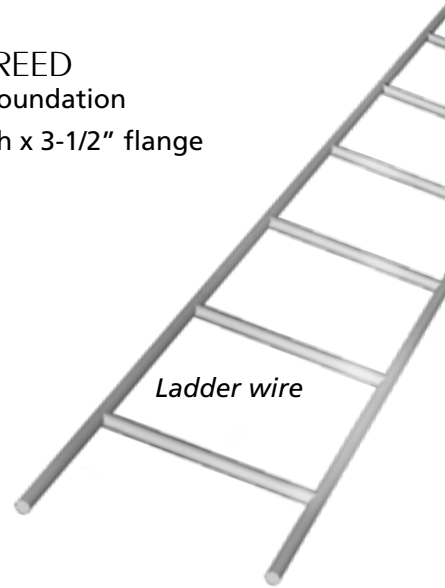
- 2.5 lb. 27" x 97" per ASTM C 847
- Non-papered self-furring lath
- Paper-backed self-furring lath

WEEP SCREED

- #7 FHA Foundation
- 10' length x 3-1/2" flange

LADDER WIRE

- HDG A1064 carbon steel wire
- Hot-dip galvanized
- 10' length: 4", 6", 8", 10", 12" block



Ladder wire

ACCESS DOORS

- Heavy gauge steel; all welded construction
- Built-in 3" lintel attached
- Positive latch accepts padlock
- Coated with red corrosion-resistant paint



Access door

24" x 16"	24" x 24"	32" x 16"	32" x 20"
32" x 24"	32" x 32"	32" x 40"	36" x 24"

FIREPLACE

DAMPER CONTROLS

- 5 position Poker controls
- Rotary controls

CLEANOUT DOORS

- Cast iron
- 8" x 8", 8" x 10", 8" x 12"
- 6 per box

FIREPLACE DAMPERS

- All cast iron
- Includes Poker control
- All 10" throat: 24", 30", 33", 36", 42", 48"

ASH DUMPS

- Cast iron
- 4-1/2" x 9"
- 12 per carton



4162 South Creek Rd East, Chattanooga TN 37406
 Phone: 877.721.3355 • Fax: 423.826.3524
www.southatlanticllc.com



South Atlantic Galvanizing, LLC is a growing company, building on fifty years of experience in the galvanizing industry.

All our products undergo thorough inspections at each phase. As a result, every job we galvanize and every steel product we produce meets the same high standards.

Our customers, across North America and internationally, have chosen South Atlantic for its reputation for superior quality and customer satisfaction.

